

Exhaust Controller for Ferrari 488 Pista

Model B4-FP Mod 1

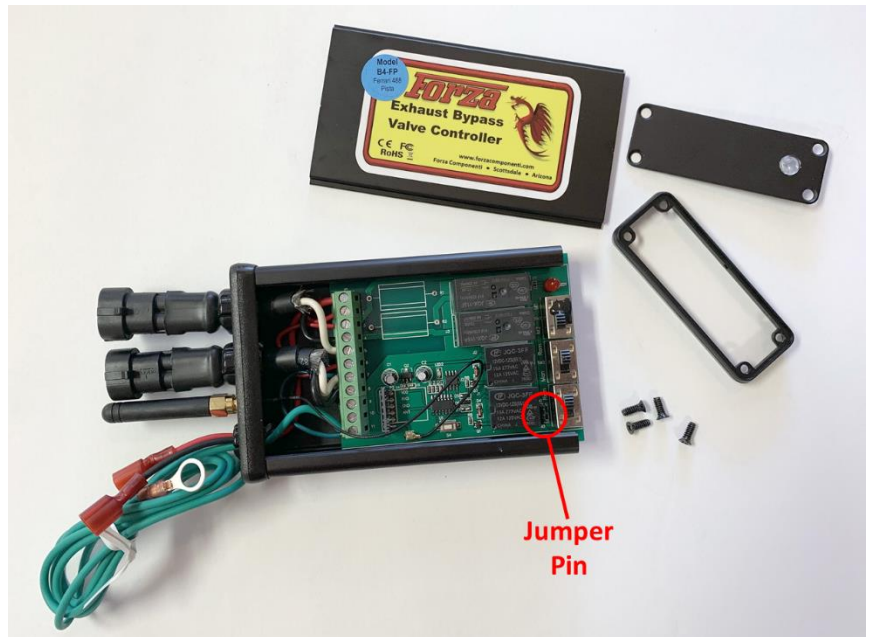
Kit Contents



Item	Description	Quantity
1	Forza Exhaust Controller – Model B4-FP	1
2	Connection wire (120 cm), red and black	2
3	Fuse Tap -Mini Form Factor w/ 5A fuse	1
4	Extension cable (120 cm)	1
5	Connection cable (120 cm)	2
6	Pierburg vacuum control valves (with 3M VHB mounting strip applied to base)	2
7	Silicone rubber vacuum line (3.5mm ID)	1
8	Vacuum hose barbed coupler	2
9	Stainless steel cable ties – 14"	3
10	3M Dual Lock mounting strips	2
11	Remote RF Transmitter (already paired to controller)	1

Set Option for Valve Position at Engine Start

- Locate Jumper Pin on Forza Printed circuit board.
- Set jumper position according to the illustration below.
- NOTE: Jumper position is only if using the remote fob to operate the controller. If using a manual switch to operate the controller, the jumper position is irrelevant.

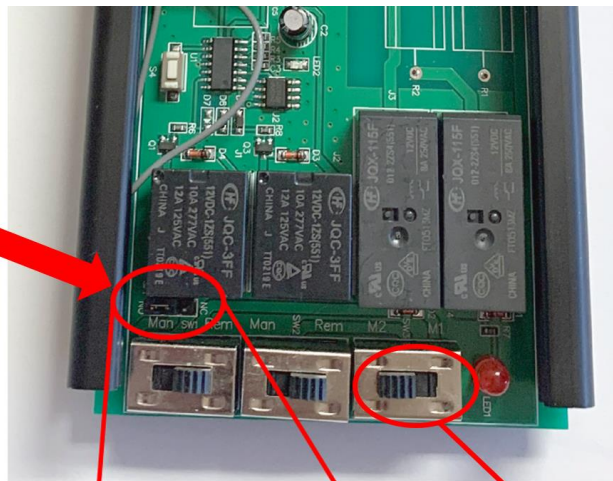
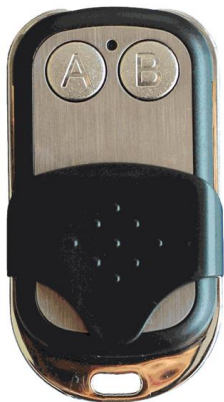


Jumper Position

ECU Control at Start Up



Always Open at Start Up



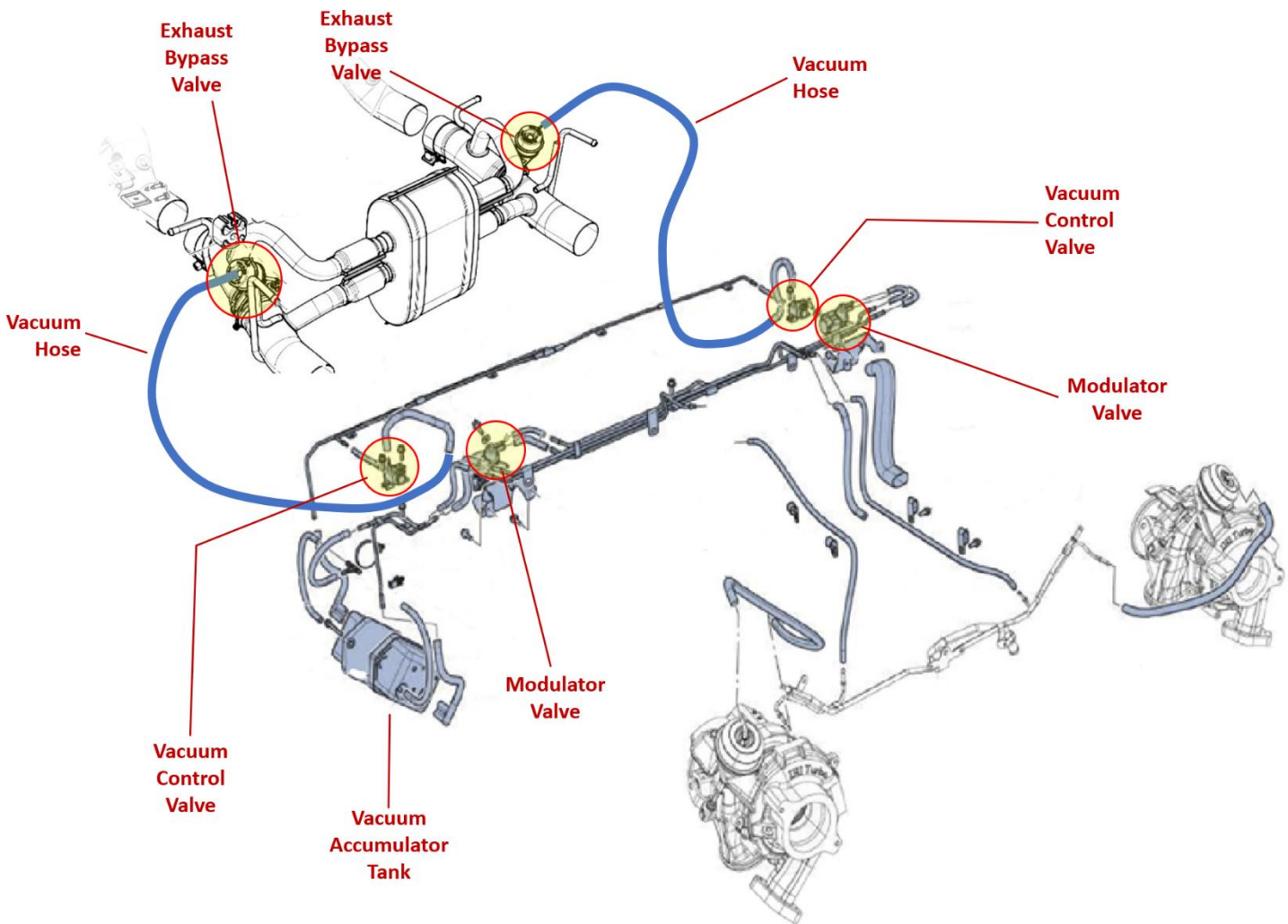
This switch must remain in M2



Ferrari 488 Pista – Locate Vacuum Control System for Exhaust Bypass Valves (2X)

Review 488 Install Tips

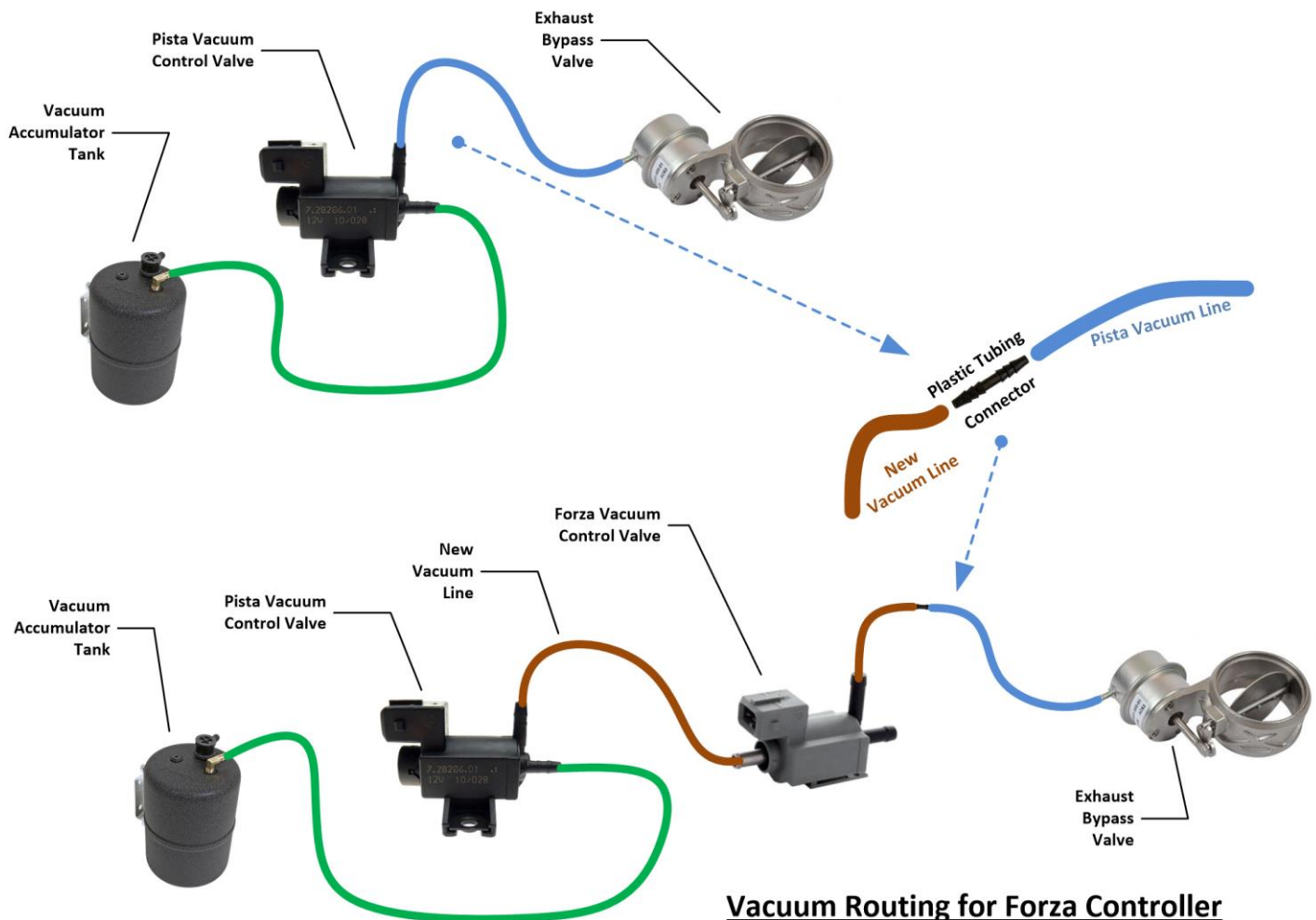
http://www.forzacomponenti.com/faq_488.html



Vacuum Routing for Forza Controller Installation

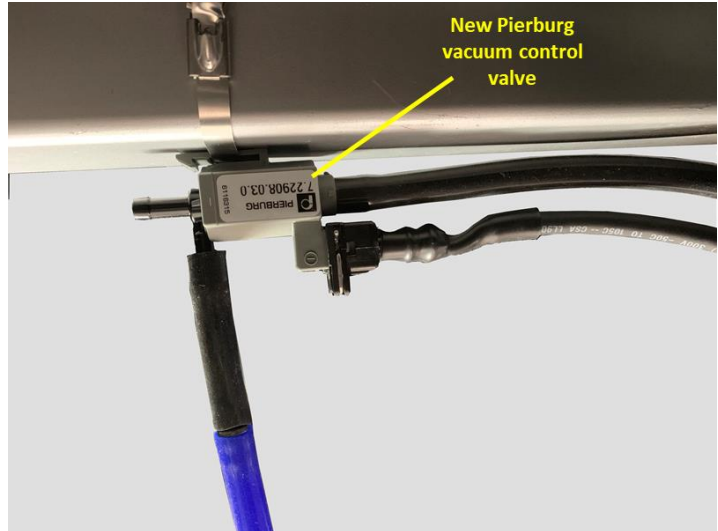
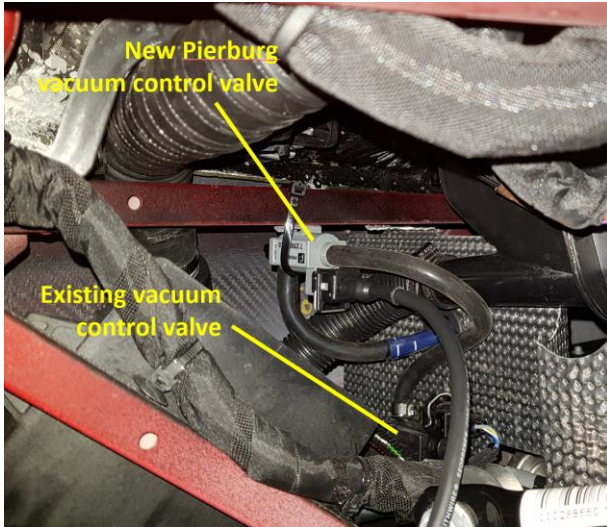
- Locate existing vacuum lines that are connected to the top port of the Pista's vacuum control valves.
- Disconnect vacuum lines from the top port of existing vacuum control valves.
- Cut short length of new vacuum tubing and couple to this vacuum line using a hose connector.
- Connect vacuum line to the top port of the new Forza (Pierburg) vacuum control valve.
- Cut length of new vacuum tubing to connect the top port of the existing valves to the front port of the new Forza (Pierburg) valves, as shown below.

Existing Pista Vacuum Routing



Location for new Pierburg Vacuum Control Valves

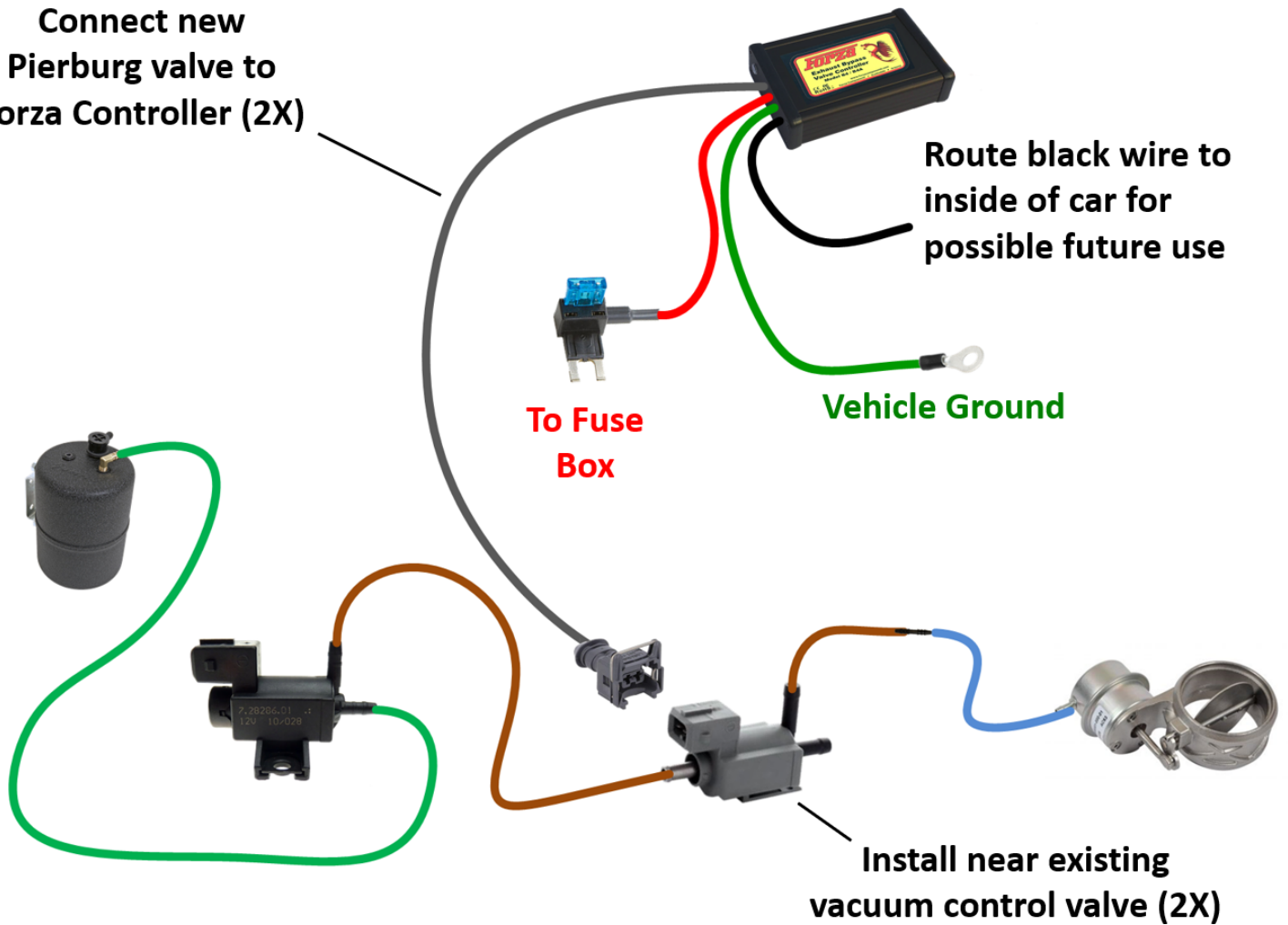
- Locate new Pierburg valves near existing vacuum control valves.
- Existing valves are bolted to the square tubing as shown in photograph.



- Select spot near existing vacuum control valves to secure new Pierburg valves. Thoroughly clean surface to be free of oil, water or any debris. Use alcohol or similar solvent.
- Peel backing off adhesive strip on new Pierburg valves and firmly press to establish a good bond with the surface of the square cross-member tubing.
- For extra security, you can use a cable tie, stainless-steel zip tie or safety wire or similar method to mechanically secure the new valves to the square tubing.

Ferrari 488 Pista – Install Forza Exhaust Controller

**Connect new
Pierburg valve to
Forza Controller (2X)**



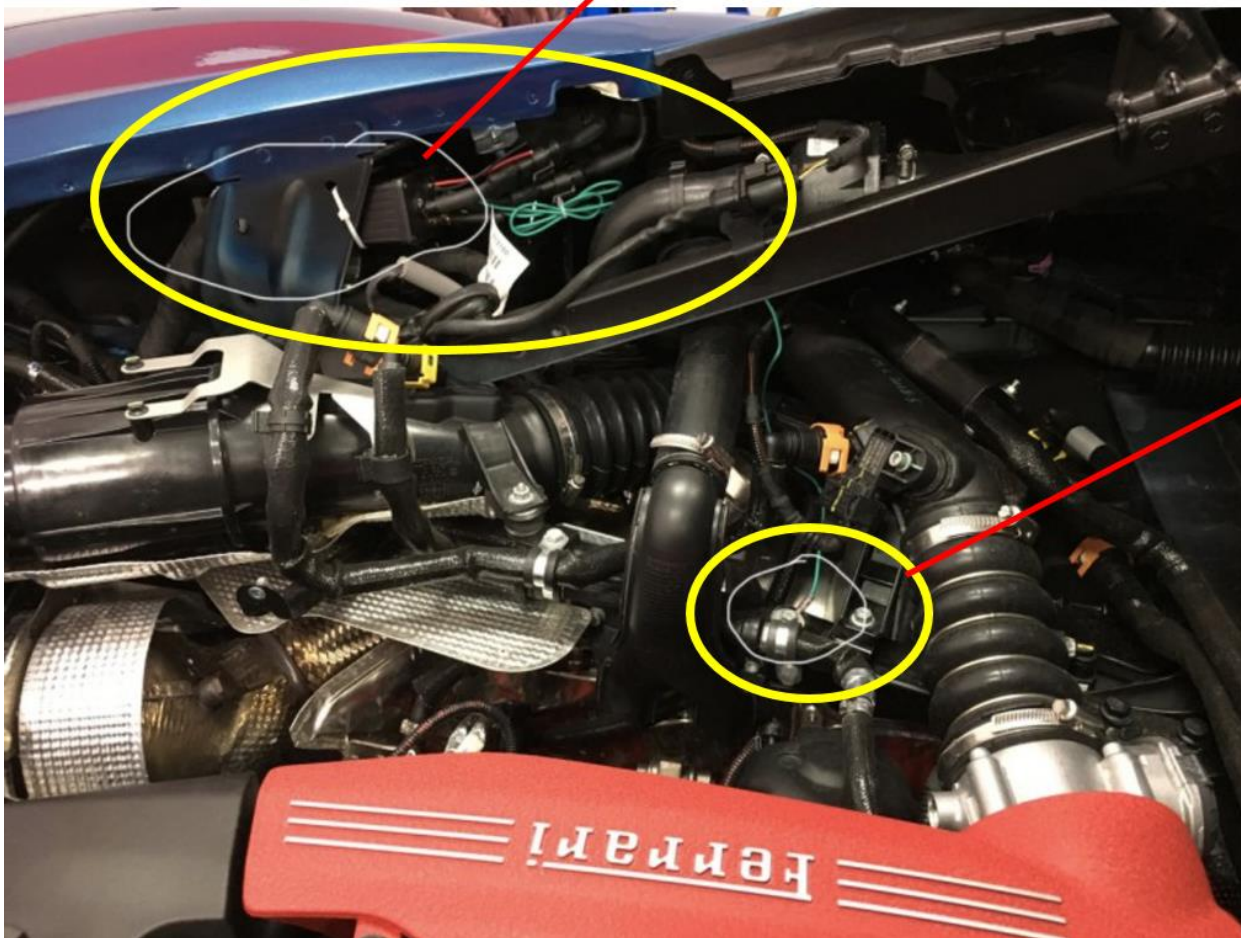
- Once you have secured the new Pierburg valves and made the vacuum line connections, then connect the female plug of each connection cable to the valve's male connector.
- Route the connection cables to the controller module and make connections.
- Secure the cables using zip ties or other suitable method.

Location for Forza Controller Module

Two recommended locations for the Forza controller module. The most common choice is in the engine bay behind one of the engine bay side covers.

CAUTION: Protect the controller module from high heat sources. Do not expose the controller module directly to exhaust components. Likewise, take care routing cables that they are protected from high heat sources as much as possible.

**Forza Controller behind
engine bay side cover**



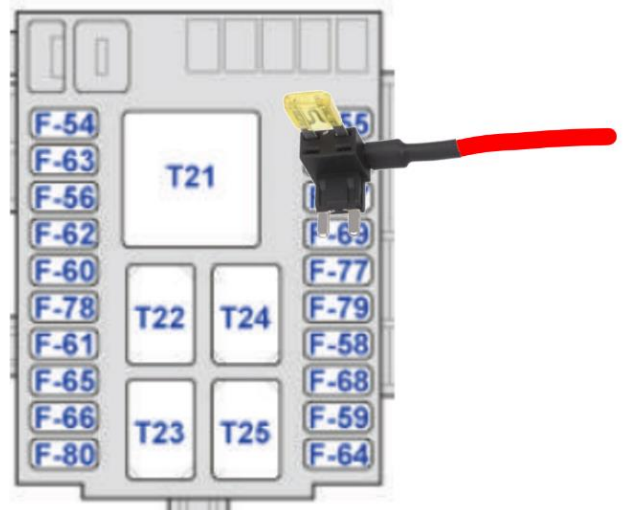
**Possible
ground
location**

Alternate Location

As an alternative, you can install the controller inside the vehicle, behind or under one of the seats. This would require routing of the two connection cables from the new Pierburg valves, through the firewall to inside the vehicle.

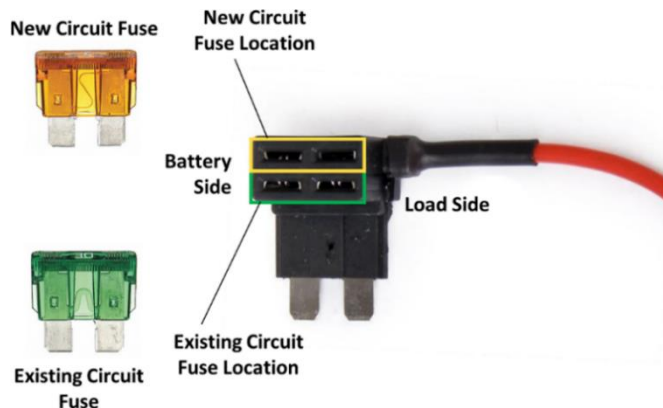
Ferrari 488 Pista – Connect Fuse Tap at Fuse Box

- Locate the fuse box on driver-side rear side panel. Remove access panel to view fuse slots.
- Identify fuse at location F-69 (Cigarette Lighter). You will be installing the fuse tap in this slot.
- There is an existing grommet in the firewall that the factory uses for routing of wiring from inside the car to the engine bay. Use existing grommet to route the wiring for the controller.
- Route the red power wire from the Forza Controller, through the grommet, to the fuse box. While you are routing red wire for power from fuse box, also route the black wire for possible future use. You do not need to fuse protect the black wire. When using the remote fob, the black wire is not active. When using a manual switch, the black wire is merely a path to ground.
- Remove the existing fuse from fuse location F-69 and insert it into the lower socket of the fuse tap. Insert the fuse tap into the selected fuse socket on the car. NOTE: Orient the fuse tap as shown in the illustration with red pigtail toward the outside of the fuse box.
- Test polarity of the fuse tap. **This is important to ensure the controller is fuse protected.**



Note: Fuse box may appear upside down.
 Note position of relays (T21 – T25)
 relative to fuse F-69.

- Remove the Forza Controller fuse (New Fuse) from tap.
- Route red power wire to the Forza controller and connect to the fuse tap. Ensure controller is properly grounded.
- Turn on ignition
- LED power indicator is **NOT** illuminated.
- Insert the Forza fuse into the fuse tap.
- With ignition still on, LED power indicator is illuminated.
- Turn off ignition and continue installation.
- Otherwise, reverse orientation of the fuse tap.

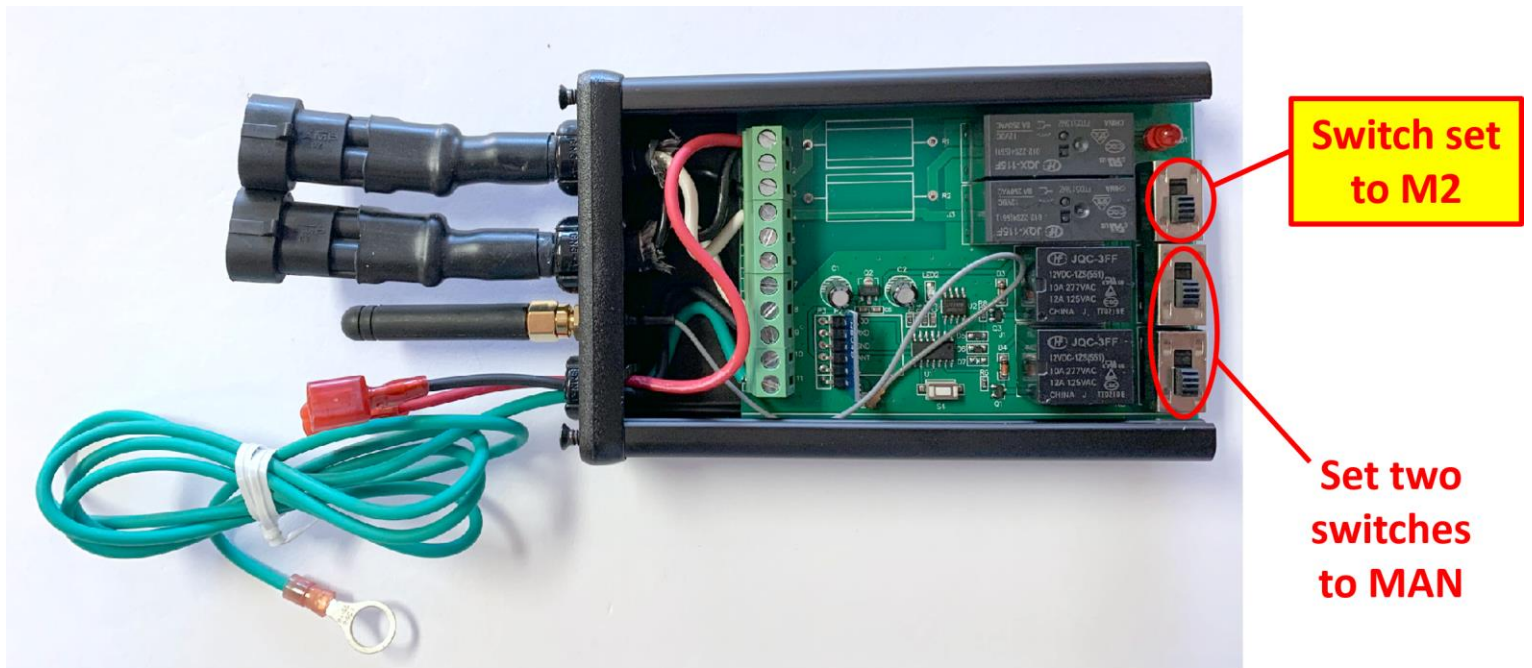


Ref.	Amp.	Use	fuse
F-54	15	/	
F-55	10	+15 injection ECU, engine ionising ECU, fuel pump ECU	
F-56	30	Driver Configuration Node	
F-57	7.5	/	
F-58	7.5	Start-up	
F-59	7.5	Reverse light power supply	
F-60	30	NAP	
F-61	7.5	+30 Driver Position Node (electronic), front lift	
F-62	7.5	Passenger Configuration Node	
F-63	20	+30 Semi-automatic gearbox main relay	
F-64	7.5	Fuel filler flap actuator power supply	
F-65	20	+30 Door lock actuator	
F-66	7.5	+30 Semi-automatic Gearbox Node	
F-69	20	+15 Cigarette lighter	
F-77	10	+15 Rear parking camera	
F-78	30	+30 Battery charger	
F-79	7.5	+15 Semi-automatic Gearbox Node	
F-80	30	+30 Starting relay	
T21	50	Relay for utilities with ignition switched on: engine, cigarette lighter, rear parking camera, DCT gearbox	

Using Manual Switch to Control Valve Position

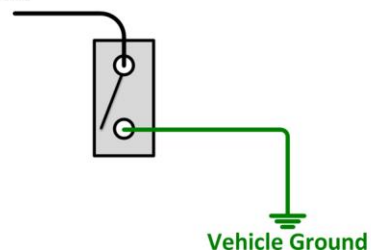
This is an optional step if you wish to use a manual switch to control the exhaust valve position.

- Access controller.
- Set the two switches shown below to the MAN position.
- Position a manual switch in the location of your choice inside the vehicle.
- Connect the black wire from controller to one side of a manual switch. Connect other side of the switch to any suitable vehicle ground.



Common Switch Types

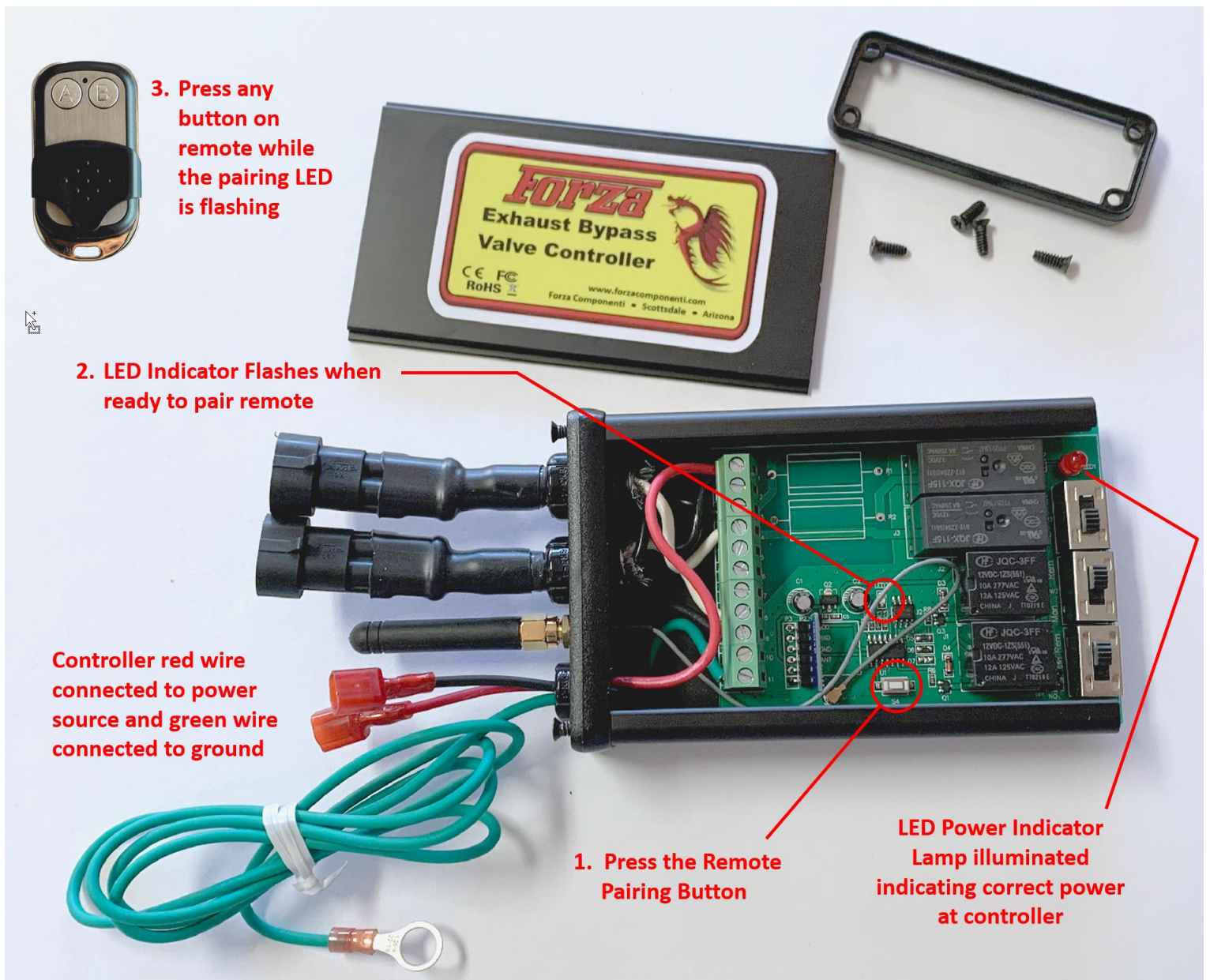
To Black Wire on Controller Module



Remote Pairing Instructions

NOTE: Your kit when originally shipped will have the remote fob(s) already paired to the controller. These instructions are to be followed when replacing the remote fob or if re-pairing becomes necessary.

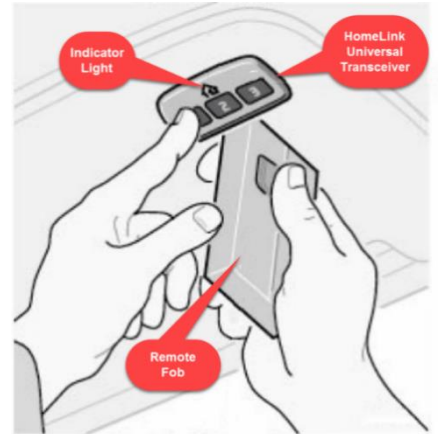
- Access the controller module
- With power applied to controller (e.g., turn on ignition), press the Remote Pairing Button until the LED indicator flashes.
- While the LED is flashing, press any button on the remote.
- LED stops flashing indicating pairing complete.



Using the Controller with Homelink Systems

The Homelink installed in the vehicle must support 433MHz. Some Homelink systems do not support this frequency (e.g., prior to 2014 in North America). For specific instructions, refer to your vehicle's owner manual for specific instructions setting up the system.

In general, to program Homelink, press and hold the Homelink button you wish to program and hold until an indicator light slowly flashes. While the Homelink light slowly flashing, hold the remote fob within a few inches of the Homelink. Press transmit button on the fob for 3 to 5 seconds, then release and immediately press again. The sequence of pressing and releasing the fob button will prevent the fob transmitter from timing out before the Homelink can successfully clone the signal. Continue pressing and releasing the fob button until the Homelink indicator lamp solid or flashes rapidly. You will need to program one button on the Homelink for function button on the transmitter fob.

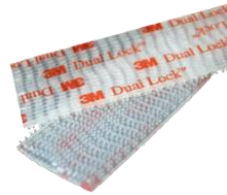


on

is
thegoes
each

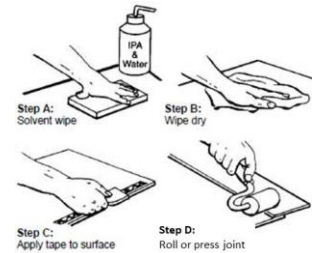
3M Dual Lock Fastening Tape

Included in your kit are two strips of 3M Dual Lock fastener.



Directions for use

- Thoroughly clean both surfaces of dirt and oil using a solvent that does not leave residue such as isopropyl alcohol.
- Apply Dual Lock to both substrate surfaces.
- Mount the strip along the length of the controller. An easy way to align the piece on the controller with the piece on the mounting surface is to position the Dual Lock on the control unit, gently press the mating piece on and then position the controller in place and gently apply pressure to stick the mating piece in place on the mounting surface. This will assure proper alignment of the two Dual Lock pieces. Once positioned, you can take the controller off and then press the piece on the mounting surface in place to assure a firm hold.
- Press each mounting piece on to the substrate and allow it to rest for 30 to 60 minutes.
- Press the controller in place until you hear or feel a click.



Dual Lock Fasteners Attachment

